

BaiFa POWER

BaiFa
POWER

Add: No. 972, Antai 3rd Road, Xishan Eco & Tech
Development Zone, Wuxi, Jiangsu , China. 214106
Web: www.baifapower.com
Tel: +86 510 85342633
Fax: +86 510 85345555-113/160
E-mail: marketing@baifapower.com



*Comprehensive Solutions For Power Generation
Fully Advanced · Reliable · Environmental*



-  Headquarters
-  Branch Office
-  Distributor
-  Agent

Drive the dream

Power the future

Content

01

Global footprint	02
About Baifa	04
History	06

02

Industrial Power	08
Baifa - C series	10
Baifa - V series	14
Baifa - M series	18
Baifa - P series	20
Baifa - SC series	24
Baifa - DW series	26
Baifa - SM series	28
Baifa - BD series	30
Baifa - K series	32
Baifa - BF series	33
Marine Power	34
Lighting Tower	36

03

Case & Power Solution	38
-----------------------	----



MARINE POWER



INDUSTRIAL POWER



LIGHTING TOWER



WHY BAIFA

Baifa, located in Wuxi, near Shanghai, which is the flourishing area of the world manufacturing, owns one of the largest manufacturing bases of diesel generator sets, marine diesel generator sets, green energy fuel generator sets and lighting towers in Asia, even in globe, covering an area of 60,000 sq.m, and with a 34,000 sq.m. assembly workshop. Baifa has long-term cooperation with world leading companies such as VOLVO PENTA, CUMMINS, STAMFORD, MTU,

PERKINS, SME MITSUBISHI, SCANIA, BAUDOUIN and etc. With a range from 8KW to 3000KW, Baifa products cover types of general and special field.

The success of our business relies on the spirit of our culture "Integrity and Honesty", we pursuit solutions with great enthusiasm, customer needs are our priority and we pay more attention to those details.

With compelling quality and service, Baifa has built a good reputation with customers in the area of generator sets, our products are exported to over 115 countries and regions, over 500 million dollars till 2018.

Our future is to become one of the world most prestigious generator sets manufacturers, and designing for more reliable, safe, efficient and easy to use products. To help our customers

gain more value and confidence on our products and projects, we will be more focus on cost cutting while improving the quality. 'One stop' comprehensive solutions for power generation.

HISTORY

1992

Initially founded in Kunming, Yunnan Province, China.

BaiFa POWER

1998

Became favourable OEM cooperative partnership with the global-famous VOLVO PENTA.

2001

Baifa headquarters moved to Wuxi National High-Technical Industrial Development Zone in Jiangsu Province, China. Honourably won the OEM authorization award by MTU with high-voltage diesel power generators.

2002

Honourably received the ISO9001 quality management approval & the Network Access License for Telecommunication Equipment awarded by Ministry of IT industry PRC.

2005

New workshop of 12000 square meters floor areas put into use. Honourably received the ISO 14000 environment management system standard, which is awarded to Enterprise of Jiangsu Province and Top 100 industries of Wuxi.

2006

Baifa supplied special diesel generator sets to UN peace-keeping projects in Tanzania. Baifa supplied 50 units of 1000KVA containerized & soundproof generators for Humanitarian project in Africa. 50 units are synchronized to be one 50MVA diesel power station with automatic parallel system and central monitoring system.

2008

Annual sales revenue exceeds eighty million USD, export reaches more than half of company sales.

2009

Became MTU one of the most important global partners, annual purchase on MTU engine/parts exceeding a value of 10 million EURO.

2012

Baifa established its subsidiary brand BaifaPower(Wuxi) with 30 million USD registered capital and a total investment of 60 million USD.

2013

Baifa honorably received famous trademark title by Jiangsu Province Government.

2015

Baifa Power (Wuxi)'s new site with total floor areas of 60000 square meters and state-of-art production-manufacturing technology, it is scheduled to put into use during 2015.

The new site is predicted to be one of the largest diesel generators manufacturing base in the China or around the world.

6,000 generator sets one year



60,000 sq.m plant



34,000 sq.m workshop



180 employees



CE



ISO9001



ISO14001



ISO18001

Now

2017
25th
Anniversary of
Baifa power

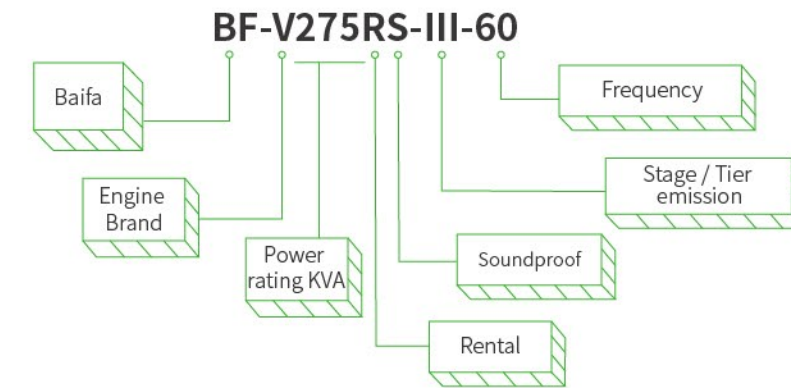


Baifa is devoting itself with great enthusiasm
to become one of the
leading power generation
manufacturers in the international lines

Naming rules



Engine brand	
C	powered by Cummins
P	powered by Perkins
V	powered by Volvo Penta
SC	powered by Scania
M	powered by MTU
SM	powered by Mitsubishi SME
DW	powered by Doosan
BD	powered by Baudouin
K	powered by Kubota
BF	powered by Faw



Cooperate partner



BaiFa[®]

Baifa - C series



50 Hz 60 Hz

Baifa - C series unit selects the Cummins engine.

Baifa has been cooperating with Cummins for more than 22 years, Baifa-C series high reliability, low applied cost has won the industrial and mining enterprises and other industry preference.

Baifa - C series power section of the product has excellent load acceptance performance, advanced economy, power performance and reliability, long service life etc.



Easy service and maintenance



Adapt to harsh environment high altitude, extreme hot and cold environment



24 / 7
Global after-sales service and spare parts supply

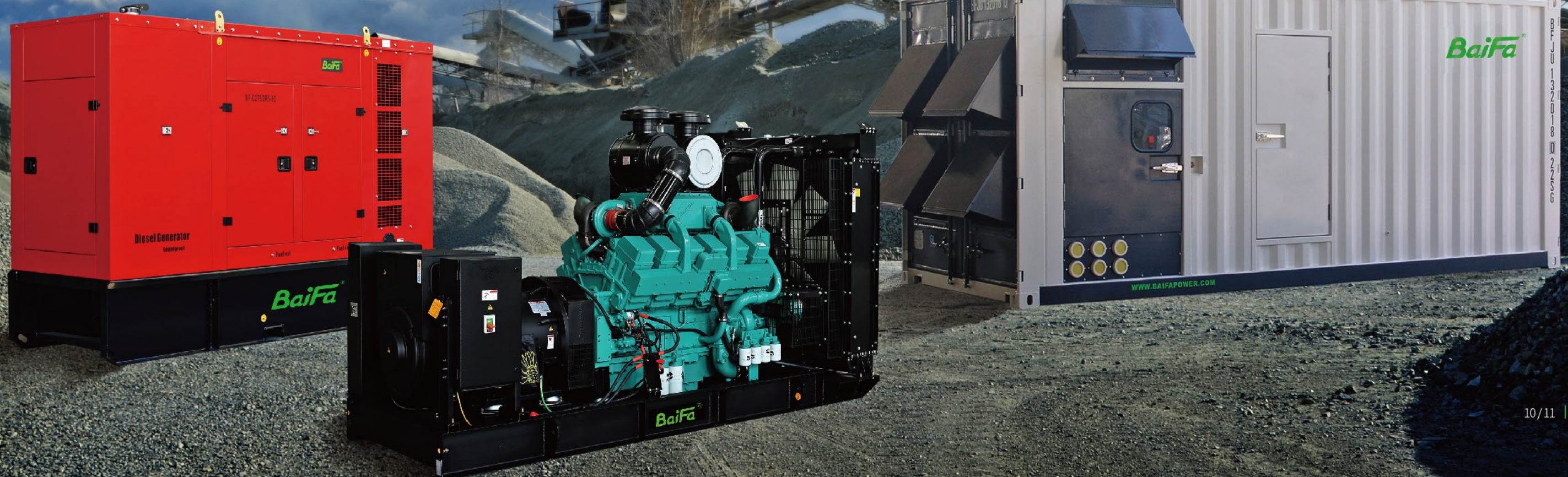
Cummins Engine

- Full range
- 50 degree ambient temperature approved
- Low operational cost
- Parts accessibilities
- Global warranty and service
- HV available

Application

Standby: Hospital, Small to big size factories, Malls and buildings, Residential, Airport & stations

Prime or continuous: Mining, Power station, Farming, Oil & gas, Rental power, High altitude application, Extreme hot region application, Pump application, Sports and events, Small to big size factories





Powered by Cummins | 400V, 1500RPM, 50Hz

Baifa Model	Power		Diesel Engine		Alternator	Control System	Dimension (L*W*H)mm		Fuel Cons 75%(L/H)	Displace ment (L)	Cylinder	Gov
	Standby KVA	Prime KVA	Brand	Model	Stamford		Open Type	Standard Soundproof				
BF-C28	28	25	CUMMINS (CHINA)	4B3.9-G1	SOL2-M1	Standard: ComAp AMF9 LCD Optional: 1. ComAp MRS10 2. ComAp MRS16	1760*760*1380	2290*1060*1680	5.5	3.9	4	M
BF-C30	30	27.5		4B3.9-G1	SOL2-P1		1760*760*1380	2290*1060*1680	6.0	3.9	4	M
BF-C40	44	40		4BT3.9-G1	S1L2-K1		1760*760*1380	2290*1060*1680	7.9	3.9	4	M
BF-C65	65	60		4BTA3.9-G2	S1L2-Y1		1760*760*1380	2440*1060*1680	10.3	3.9	4	E
BF-C80	80	72.5		4BTA3.9-G11	UCI 224F1		1760*760*1380	2440*1060*1680	12.0	3.9	4	E
BF-C90	90	80			UCI 224G1		1760*760*1380	2600*1060*1680	13.4	3.9	4	E
BF-C90-III	90	80		QSB3.9-G3	UCI 224G1		1760*760*1380	2600*1060*1680	15.1	3.9	4	E
BF-C103	102	94		6BT5.9-G1	UCI 274C1		2300*830*1700	2810*1140*1830	15.6	5.9	6	M
BF-C110	109	100		6BT5.9-G2	UCI 274C1		2300*830*1700	2810*1140*1830	17.2	5.9	6	E
BF-C125	125	115		6BTA5.9-G2	UCI 274D1		2300*830*1700	3230*1170*1800	19.3	5.9	6	E
BF-C142	142	130		6BTA5.9-G2	UCI 274E1		2350*830*1700	3230*1170*1800	21.2	5.9	6	E
BF-C140-III	140	125		QSB5.9-G3	UCI 274E1		2350*830*1700	3230*1170*1800	22.6	5.9	6	E
BF-C170	170	156		6BTA5.9-G12	UCI 274F1		2390*860*1850	3230*1170*1800	24.6	5.9	6	E
BF-C175	175	160		6CTA8.3-G1	UCI 274F1		2390*860*1850	3230*1170*1800	26.4	8.3	6	M
BF-C200	200	180		6CTA8.3-G1	UCI 274G1		2390*860*1850	3230*1170*1800	29.8	8.3	6	M
BF-C200	200	180		6CTA8.3-G2	UCI 274G1		2390*860*1850	3230*1170*1800	29.7	8.3	6	E
BF-C200-III	200	180		QSB6.7-G4	UCI 274G1		2390*860*1850	3230*1170*1800	31.8	6.7	6	E
BF-C220	220	200		6CTAA8.3-G2	UCI 274H1		2450*960*1850	3590*1150*2050	32.2	8.3	6	E
BF-C275D	275	250		6LTAA8.9-G2	UCDI 274K1		2500*960*1850	3590*1150*2050	38.3	8.9	6	E
BF-C350D	340	310		6LTAA9.5-G1	S4L1D-D41		2500*1060*1850	3590*1250*2050	48.0	9.5	6	E
BF-C275D-III	275	250		QSL8.9-G4	UCDI 274K1		2500*1060*1850	3590*1250*2050	46.1	8.9	6	E
BF-C275	275	250		MTA11-G2	UCDI 274K1		3020*1100*1850	3890*1460*2150	39.9	10.8	6	E
BF-C275N	275	250		NTA855-GA	UCDI 274K1		3020*1100*1850	3890*1460*2150	39.3	14	6	E
BF-C350	325	300		MTAA11-G3	HCI 444D1		3020*1100*1850	3890*1460*2150	44.9	10.8	6	E
BF-C360	350	320		NTA855-G1B	S4L1D-E41		3020*1100*1850	4230*1460*2150	53.5	14	6	E
BF-C375	375	344		NTA855-G2A	S4L1D-E41		3020*1100*1850	4230*1460*2150	53.5	14	6	E
BF-C400	388	350		NTA855-G4	S4L1D-E41		3020*1100*1850	4230*1460*2150	55.7	14	6	E
BF-C412	412	375		NTAA855-G7	S4L1D-F41		3090*1100*1850	4230*1460*2150	62.2	14	6	E
BF-C440Q	438	400		QSNT-G3	S4L1D-F41		3090*1100*1850	4230*1460*2150	67.4	14	6	E
BF-C450	450	NA		NTAA855-G7A	S4L1D-F41		3090*1100*1850	4230*1460*2150	71.8	14	6	E
BF-C500DQ	500	450		QSZ13-G3	S4L1D-G41		3400*1258*2050	4630*1660*2250	67.7	13	6	E
BF-C550Q	550	500		QSX15-G8	HCI 544C1		3400*1258*2050	4630*1660*2250	77.1	15	6	E
BF-C500	500	450		KTA19-G3	S4L1D-G41		3400*1258*2050	4630*1660*2250	72.8	19	6	E
BF-C550	550	500		KTA19-G3A	HCI 544C1		3400*1258*2050	4630*1660*2250	80.1	19	6	E
BF-C650	650	NA		KTA19-G8	HCI 544E1		3650*1500*2050	4630*1660*2250	NA	19	6	E
BF-C660	650	575		KTAA19-G6	HCI544E1		3650*1638*2050	5030*1860*2550	94.6	19	6	E
BF-C688	688	NA		KTAA19-G6A	HCI 544FS1		3650*1638*2050	5030*1860*2550	NA	19	6	E
BF-C700Q	700	635		QSK19-G4	HCI 544FS1		3650*1638*2050	5030*1860*2550	106.8	19	6	E
BF-C825	825	750		KTA38-G2	LV1634B1		4550*2100*2320	ISO 20'ft GP	127.3	38	12V	E
BF-C880	880	800		KTA38-G2B	S6L1D-C4		4550*2100*2320	ISO 20'ft GP	125.6	38	12V	E
BF-C1000	1000	910	KTA38-G2A	HCI 634H1 or S6L1D-D4	4550*2100*2320	ISO 20'ft GP	145.1	38	12V	E		
BF-C1100	1100	1000	KTA38-G5	S6L1D-E4	4750*2100*2320	ISO 20'ft GP	158.2	38	12V	E		
BF-C1250	1250	NA	KTA38-G9	S6L1D-F4	4750*2100*2320	ISO 20'ft GP	NA	38	12V	E		
BF-C1375Q	1375	1250	QSK38-G5	S6L1D-G4	5000*2200*2500	ISO 20'ft GP	202.3	38	12V	E		
BF-C1375	1375	1250	KTA50-G3	S6L1D-G4	5000*2200*2500	ISO 20'ft GP	195.9	50	16V	E		
BF-C1600	1650	1500	KTA50-GS8	PI 734C1	5820*2200*2800	ISO 40'ft HQ	238.5	50	16V	E		
BF-C700V	700	635	VTA28-G5	HCI 544FS1	3650*1750*2050	5030*1860*2550	103.6	28	12V	E		
BF-C825V	825	750	VTA28-G6	LV1634B1	3850*1750*2050	5530*1860*2550	122.0	28	12V	E		
BF-C900Q	900	810	QSK23-G3	S6L1D-C4	4550*2100*2320	ISO 20'ft GP	127.5	23.15	6	E		
BF-C1000Q	1000	910	QST30-G3	HCI 634H1 or S6L1D-D4	4550*2100*2320	ISO 20'ft GP	137.9	30.5	12V	E		
BF-C1100Q	1100	1000	QST30-G4	S6L1D-E4	4750*2100*2320	ISO 20'ft GP	150.1	30.5	12V	E		
BF-C2060Q	2062	1875	QSK60-G3	PI 734E1	5820*2200*2800	ISO 40'ft HQ	270.9	60.2	16V	E		
BF-C2250Q	2250	2050	QSK60-G4	PI 734F1	5820*2200*2800	ISO 40'ft HQ	296.2	60.2	16V	E		
BF-C2500Q	2500	2250	QSK60-G21	PI 734H1	5820*2200*2800	ISO 40'ft HQ	363.4	60.2	16V	E		

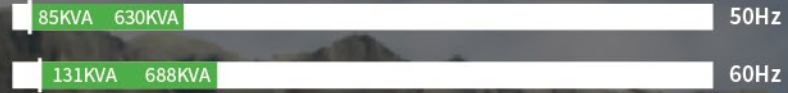


Powered by Cummins | 440V, 1800RPM, 60Hz

Baifa Model	Power		Diesel Engine		Alternator	Control System	Dimension (L*W*H)mm		Fuel Cons 75%(L/H)	Displace ment (L)	Cylinder	Gov
	Standby KVA	Prime KVA	Brand	Model	Stamford		Open Type	Standard Soundproof				
BF-C28-60	33	30	CUMMINS (CHINA)	4B3.9-G2	PI 144F1	Standard: ComAp AMF9 LCD Optional: ComAp 1. MRS10 2. MRS16	1760*760*1380	2290*1060*1680	6.8	3.9	4	M
BF-C40-60	50	45		4BT3.9-G2	PI 144J1		1760*760*1380	2290*1060*1680	8.4	3.9	4	E
BF-C65-60	68	62.5		4BTA3.9-G2	UCI224D1		1760*760*1380	2440*1060*1680	11.9	3.9	4	E
BF-C70-60	70	65			UCI224E1		1760*760*1380	2440*1060*1680	11.9	3.9	4	E
BF-C75-60	77	70		4BTA3.9-G11	UCI224E1		1760*760*1380	2440*1060*1680	12.5	3.9	4	E
BF-C80-60	95	85			UCI224F1		1760*760*1380	2440*1060*1680	14	3.9	4	E
BF-C90-60	100	90		UCI224G1	1760*760*1380		2600*1060*1680	15.6	3.9	4	E	
BF-C105-60	120	110		6BT5.9-G2	UCI274C1		2300*830*1700	2810*1140*1830	20.8	5.9	6	E
BF-C110-60	138	125		6BTA5.9-G2	UCI274D1		2300*830*1700	2810*1140*1830	21.9	5.9	6	E
BF-C125-60	145	130			UCI 274D1		2300*830*1700	3230*1170*1800	22.8	5.9	6	E
BF-C142-60	156	145		6BTA5.9-G2	UCI274E1		2350*830*1700	3230*1170*1800	23.4	5.9	6	E
BF-C170-60	180	168		6BTA5.9-G12	UCI274E1		2390*860*1850	3230*1170*1800	29.2	5.9	6	E
BF-C200-60	212	200		6CTA8.3-G2	UCI274G1		2390*860*1850	3230*1170*1800	34.3	8.3	6	E
BF-C220-60	250	230		6CTAA8.3-G2	UCI274H1		2450*960*1850	3590*1150*2050	37.8	8.3	6	E
BF-C275D-60	275	250		6LTAA8.9-G2	UCDI 274J1		2500*960*1850	3590*1150*2050	41.6	8.9	6	E
BF-C300D-60	306	280		6LTAA8.9-G3	UCDI 274J1		2500*960*1850	3590*1150*2050	44.4	8.9	6	E
BF-C350D-60	330	300		6LTAA9.5-G1	UCDI 274K1		2500*1060*1850	3590*1250*2050	50	9.5	6	E
BF-C312-60	344	310		NTA855-G1	S4L1D-C41		3020*1100*1850	4230*1460*2150	56.1	14	6	E
BF-C360-60	375	344		NTA855-G1B	S4L1D-D41		3020*1100*1850	4230*1460*2150	61.7	14	6	E
BF-C400-60	435	400		NTA855-G3	S4L1D-E41		3020*1100*1850	4230*1460*2150	66	14	6	E
BF-C440-60	500	438		KTA19-G2	S4L1D-F41		3400*1258*2050	4630*1660*2250	76	19	6	E
BF-C500DQ-60	500	460		QSZ13-G3	S4L1D-F41		3400*1258*2050	4630*1660*2250	75.7	13	6	E
BF-C550-60	625	562		KTA19-G3A	HCI 544D1		3400*1258*2050	4630*1660*2250	83.4	19	6	E
BF-C688-60	750	NA		KTAA19-G6A	HCI 544E1		3650*1638*2050	5030*1860*2550	106.5	19	6	E
BF-C700Q-60	750	688		QSK19-G5	HCI 544E1		3650*1638*2050	5030*1860*2550	120	19	6	E
BF-C700-60	850	775		KT38-G	HCI 544F1		4550*2100*2320	ISO 20'ft GP	118	38	12V	E
BF-C825-60	1000	910		KTA38-G2	S6L1D-C4		4550*2100*2320	ISO 20'ft GP	157	38	12V	E
BF-C1000-60	1100	1000		KTA38-G2A	S6L1D-D4		4550*2100*2320	ISO 20'ft GP	164	38	12V	E
BF-C1100-60	1250	1125		KTA38-G4	S6L1D-E4		4750*2100*2320	ISO 20'ft GP	190	38	12V	E
BF-C1250-60	1375	NA		KTA38-G9	S6L1D-F4		5000*2200*2500	ISO 20'ft GP	271	38	12V	E
BF-C1375-60	1562	1420		KTA50-G3	S6L1D-G4		5000*2200*2500	ISO 20'ft GP	222	50	16V	E
BF-C1600-60	1760	1600		KTA50-G9	PI 734B1		5820*2200*2800	ISO 20'ft HQ	257	50	16V	E
	1875	1600			PI 734C1		5820*2200*2800	ISO 20'ft HQ	257	50	16V	E
BF-C700V-60	750	682		VTA28-G5	HCI 544E1		4000*1750*2050	5800*1800*2550	118	28	12V	E
BF-C900Q-60	1000	910		QSK23-G3	S6L1D-C4		4550*2100*2320	ISO 20'ft GP	139	23.15	6	E
BF-C1000Q-60	1125	1029		QST30-G3	S6L1D-D4		4550*2100*2320	ISO 20'ft GP	154	30	12V	E
BF-C1100Q-60	1250	1138		QST30-G4	S6L1D-E4		4750*2100*2320	ISO 20'ft GP	177	30	12V	E
BF-C1800Q-60	2000	1600		QSK50-G6	PI 734D1		5450*2300*2600	ISO 40'ft GP	365	50	16V	E
BF-C2500Q-60	2500	2280		QSK60-G6	PI 734F1		5820*2300*2600	ISO 40'ft GP	391	60	16V	E

BaiFa®

Baifa - V series



Baifa is one of Volvo Penta's largest OEM in China, our cooperation relationship was built back in 1997. For past two decades, Baifa was always pursuing Volvo's three core: Quality, Safety and Environmental Protection

Baifa V-series is compelling for its quality and environmental consciousness as it is highly efficient and achieving Euro Stage II, Stage III, EPA TIER 4F and Stage V emission standards



The engine design overhaul period of more than 25000 hours for the first time



Better make the engine more fuel-efficient (an average of 198 g/KWH)



Adapt to harsh environment high altitude, extreme hot and cold environment

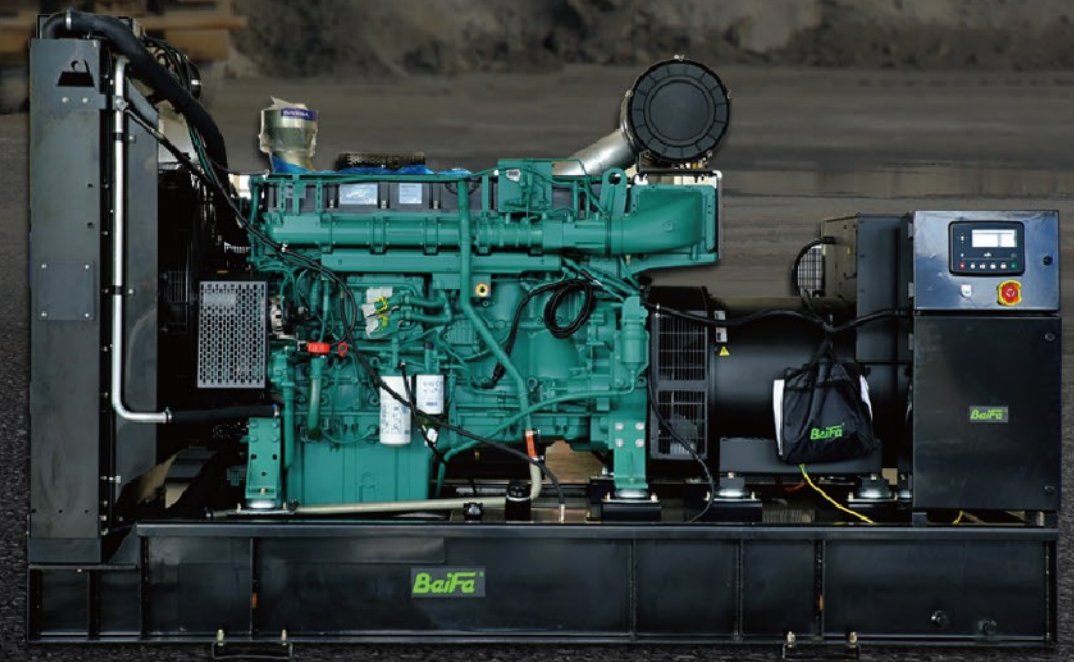
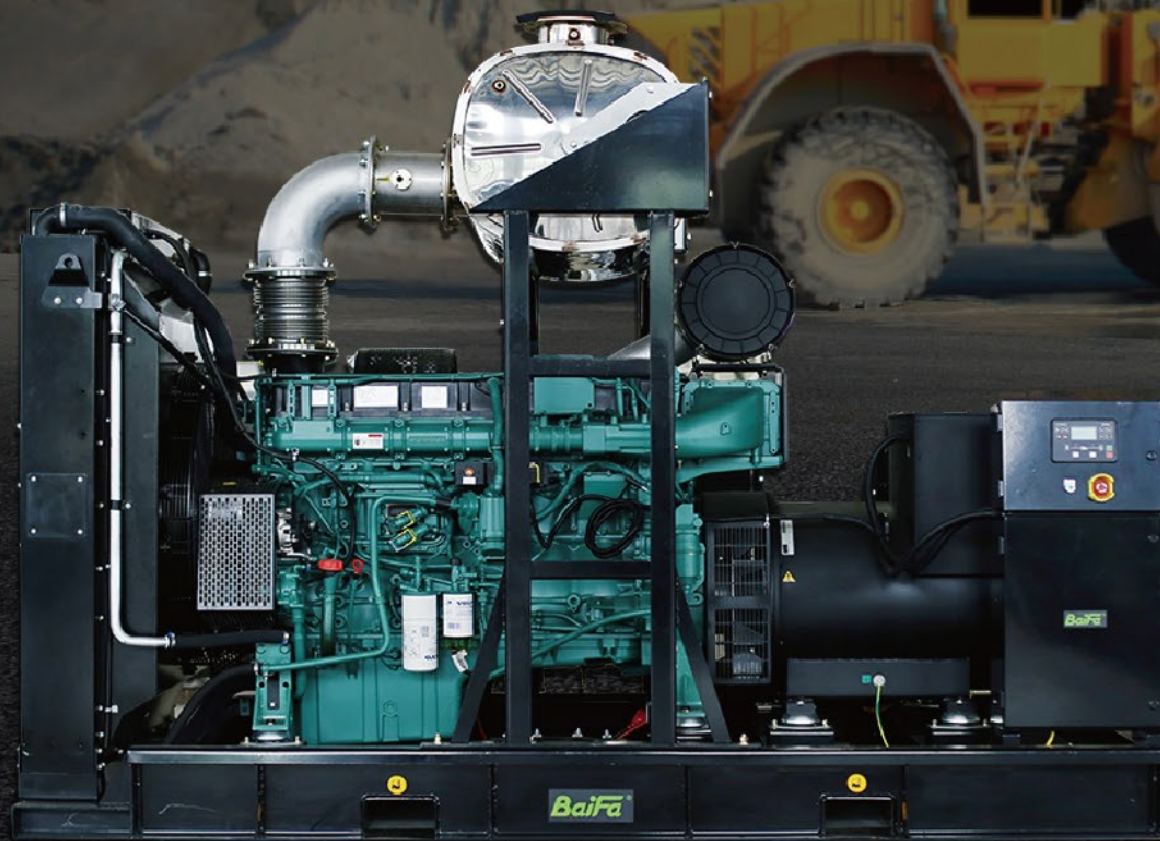
Volvo Engine

- Medium range
- Low noise
- Low fuel consumption
- Low emission (Tier 2, Tier 3, Tier 4F, Stage 5)
- Low footprint
- Longer service interval
- Longer overhaul interval
- 55 degree ambient temperature approved
- ISO8528 G3 load taking
- Made in EUROPE
- Global warranty and service
- Full range dual speed engine

Application

Standby: Suitable of all small to medium size industrial application

Prime or continuous: Mining, Power station, Farming, Oil & gas, Port and off - shore, On road or off-road mobile power (power truck), Rental power, Heavy construction equipment, High altitude application, Extreme hot region application, Extreme cool region application, Pump application, Sports and events, Small to medium size factories





Powered by Volvo Penta | 400V, 1500RPM, 50Hz, Stage II / Tier 2

Table with 12 columns: Baifa Model, Power (Standby KVA, Prime KVA), Diesel Engine (Brand, Model, Stamford), Alternator (Stamford), Control System, Dimension (L*W*H)mm (Open Type, Standard Soundproof), Fuel Cons (75%(L/H)), Displacement (L), Cylinder, Gov. Rows include models like BF-V94, BF-V109, BF-V142, etc.

Powered by Volvo Penta | 400V, 1500RPM, 50Hz, Stage III /Tier 3

Table with 12 columns: Baifa Model, Power (Standby KVA, Prime KVA), Diesel Engine (Brand, Model, Stamford), Alternator (Stamford), Control System, Dimension (L*W*H)mm (Open Type, Standard Soundproof), Fuel Cons (75%(L/H)), Displacement (L), Cylinder, Gov. Rows include models like BF-V95-III, BF-V110-III, BF-V145-III, etc.



Powered by Volvo Penta | 440V, 1800RPM, 60Hz, Stage II / Tier 2

Table with 12 columns: Baifa Model, Power (Standby KVA, Prime KVA), Diesel Engine (Brand, Model, Stamford), Alternator (Stamford), Control System, Dimension (L*W*H)mm (Open Type, Standard Soundproof), Fuel Cons (75%(L/H)), Displacement (L), Cylinder, Gov. Rows include models like BF-V142-60, BF-V206-60, BF-V220-60, etc.

Powered by Volvo Penta | 440V, 1800RPM, 60Hz, Tier 3

Table with 12 columns: Baifa Model, Power (Standby KVA, Prime KVA), Diesel Engine (Brand, Model, Stamford), Alternator (Stamford), Control System, Dimension (L*W*H)mm (Open Type, Standard Soundproof), Fuel Cons (75%(L/H)), Displacement (L), Cylinder, Gov. Rows include models like BF-V95-III-60, BF-V110-III-60, BF-V145-III-60, etc.

Powered by Volvo Penta | 480V, 1800RPM, 60Hz, Tier 4f

Table with 7 columns: Baifa Model, Power (Standby KVA, Prime KVA), Diesel Engine (Brand, Model, Emission), Alternator (Stamford), Dimension (L*w*h)mm (Open Type). Rows include models like BF-V100-4F-60, BF-V130-4F-60, BF-V165-4F-60, etc.

BaiFa®

Baifa - M series

750KVA 3000KVA 50Hz
910KVA 3450KVA 60Hz



The engine design overhaul period of more than 23000 hours for the first time



Reliability, economical, flexibility



G3 load acceptance ≥ 70%

MTU Engine

- High range
- Low noise
- Low fuel consumption
- Low emission (TA-LUFT)
- Low footprint
- Longer service interval
- Longer overhaul interval
- 50 degree ambient temperature approved
- ISO8528 G3 load taking
- Made in GERMANY or CHINA
- Global warranty and service
- HV available

Application

Standby: Suitable of all medium to big size industrial application

Prime or continuous: Mining, Power station, Farming, Oil & gas, Port and off-shore, On road or off-road mobile power (power truck), Rental power, Heavy construction equipment, High altitude application, Extreme hot region application, Extreme cool region application, Pump application, Sports and events, Small to medium size factories

Powered by MTU | 400V, 1500RPM, 50Hz

50 Hz 60 Hz

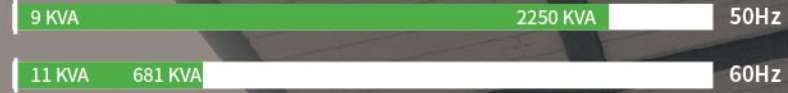
Baifa Model	Power		Diesel Engine		Alternator	Control System	Dimension (L*W*H)mm		Fuel Cons 75%(L/H)	Displace ment (L)	Cylinder	Gov
	Standby KVA	Prime KVA	Brand	Model	Stamford		Open Type	Standard Soundproof				
BF-M825	825	750	MTU (GERMANY)	12V2000G65	LVI 634B1	Standard: ComAp auto control system MRS16	4500*2100*2080	5800*1800*2550	123	23.88	12V	E
BF-M880	880	800		12V2000G65	S6L1D-C4		4500*2100*2080	5800*1800*2550	129	23.88	12V	E
BF-M1000	1000	910		16V2000G25	HCI 634H1		4500*2100*2080	ISO 20'ft GP	143	31.84	16V	E
BF-M1100	1100	1000		16V2000G65	S6L1D-E4		4500*2100*2080	ISO 20'ft GP	155	31.84	16V	E
BF-M1250	1250	1135		18V2000G65	S6L1D-F4		4600*2100*2300	ISO 20'ft GP	178	35.82	18V	E
BF-M1375	1375	1250		18V2000G76F / 26F	S6L1D-G4		3960*1835*2260	ISO 20'ft HQ	185	40.2	18V	E
BF-M1500	NA	1400		12V4000G23R	S6L1D-H4		3960*1835*2260	ISO 20'ft HQ	215	57.2	12V	E
BF-M1700	1700	1550		12V4000G23	PI 734C1		3960*1835*2260	ISO 20'ft HQ	230	57.2	12V	E
BF-M1800	1800	1640		12V4000G23	PI 734D1		3960*1835*2260	ISO 40'ft HQ	242	57.2	12V	E
BF-M2000	2000	1850		12V4000G63	PI 734E1		3980*1845*2270	ISO 40'ft HQ	271	57.2	12V	E
BF-M2250	2250	2050		16V4000G23	ECO 46-1L (Mecc Alte) PI 734F1		4790*1845*2270	ISO 40'ft HQ	302	76.3	16V	E
BF-M2400	2400	2200		16V4000G63	PI 734G1		4790*1845*2270	ISO 40'ft HQ	302	76.3	16V	E
BF-M2500	2500	2250		16V4000G63	PI 734H1		5450*1845*2560	ISO 40'ft HQ	323	76.3	16V	E
BF-M2750	2750	2500		20V4000G23	ECO 46-2L (Mecc Alte)		5450*1845*2560	ISO 40'ft HQ	330	76.3	16V	E
BF-M3000	3000	2750		20V4000G63	ECO 46-VL (Mecc Alte)		5650*1900*2650	ISO 40'ft HQ	379	95.4	20V	E
BF-M3250	3250	3000	20V4000G63L	LSA 53.2M9 (Leroy Somer)	5700*1950*2700	ISO 40'ft HQ	415	95.4	20V	E		
BF-M1700	1700	1550	MTU (YUCHAI)	12V4000G23	PI 734C1	3960*1835*2260	ISO 40'ft HQ	230	57.2	12V	E	
BF-M1800	1800	1640		12V4000G23	PI 734D1	3960*1835*2260	ISO 40'ft HQ	242	57.2	12V	E	
BF-M2000	2000	1850		12V4000G63	PI 734E1	3980*1845*2270	ISO 40'ft HQ	271	57.2	12V	E	
BF-M2250	2250	2050		16V4000G23	ECO 46-1L (Mecc Alte) PI 734F1	4790*1845*2270	ISO 40'ft HQ	302	76.3	16V	E	
BF-M2500	2500	2250		16V4000G63	PI 734H1	4790*1845*2270	ISO 40'ft HQ	302	76.3	16V	E	
BF-M2750	2750	2500		20V4000G23	ECO 46-2L (Mecc Alte)	5450*1845*2560	ISO 40'ft HQ	330	76.3	16V	E	
BF-M3000	3000	2750		20V4000G63	ECO 46-VL (Mecc Alte)	5650*1900*2650	ISO 40'ft HQ	379	95.4	20V	E	
BF-M3250	3250	3000		20V4000G63L	LSA 53.2M9 (Leroy Somer)	5700*1950*2700	ISO 40'ft HQ	415	95.4	20V	E	

Powered by MTU | 440V, 1800RPM, 60Hz

Baifa Model	Power		Diesel Engine		Alternator	Control System	Dimension (L*W*H)mm		Fuel Cons 75%(L/H)	Displace ment (L)	Cylinder	Gov	
	Standby KVA	Prime KVA	Brand	Model	Stamford		Open Type	Standard Soundproof					
BF-M880-60	1000	910	MTU (GERMANY)	12V2000G85	S6L1D-C4	Standard: ComAp auto control system MRS16	4000*1750*2050	5800*1800*2550	152	23.88	12V	E	
BF-M1000-60	1137	1025		16V2000G45	S6L1D-D4		4500*2100*2080	ISO 20'ft GP	170	31.84	16V	E	
BF-M1100-60	1265	1150		16V2000G85	S6L1D-E4		4500*2100*2080	ISO 20'ft GP	189	31.84	16V	E	
BF-M1250-60	1450	1338		18V2000G85	S6L1D-F4		4600*2100*2300	ISO 20'ft GP	220	35.82	18V	E	
BF-M1350-60	1500	1362		18V2000G85	S6L1D-G4		4600*2100*2300	ISO 20'ft GP	224	35.82	18V	E	
BF-M1700-60	1875	1700		12V4000G43	PI 734C1		3960*1835*2260	ISO 20'ft HQ	266	57.2	12V	E	
BF-M2000-60	2200	2000		12V4000G83	PI 734E1		3980*1845*2270	ISO 40'ft HQ	310	57.2	12V	E	
BF-M2250-60	2500	2275		16V4000G43	ECO 46-1L (Mecc Alte) PI 734F1		4790*1845*2270	ISO 40'ft HQ	359	76.3	16V	E	
BF-M2500-60	2750	2500		16V4000G83	PI 734G1		4790*1845*2270	ISO 40'ft HQ	359	76.3	16V	E	
BF-M2750-60	3125	2813		20V4000G43	ECO 46-2L (Mecc Alte)		5400*1845*2500	ISO 40'ft HQ	389	76.3	16V	E	
BF-M3000-60	3438	3125		20V4000G83	ECO46-VL (Mecc Alte)		5650*1900*2650	ISO 40'ft HQ	457	95.4	20V	E	
BF-M3250-60	3750	3450		20V4000G83L	LSA 53.1M80 (Leroy Somer)		5700*1950*2700	ISO 40'ft HQ	497	95.4	20V	E	
BF-M1700-60	1875	1700		MTU (YUCHAI)	12V4000G43		PI 734C1	3960*1835*2260	ISO 20'ft HQ	266	57.2	12V	E
BF-M2000-60	2200	2000			12V4000G83		PI 734E1	3980*1845*2270	ISO 40'ft HQ	310	57.2	12V	E
BF-M2250-60	2500	2275			16V4000G43		ECO 46-1L (Mecc Alte) PI 734F1	4790*1845*2270	ISO 40'ft HQ	359	76.3	16V	E
BF-M2500-60	2750	2500	16V4000G83		PI 734G1	4790*1845*2270	ISO 40'ft HQ	359	76.3	16V	E		
BF-M2750-60	3125	2813	20V4000G43		ECO 46-2L (Mecc Alte)	5400*1845*2500	ISO 40'ft HQ	389	76.3	16V	E		
BF-M3000-60	3438	3125	20V4000G83	ECO46-VL (Mecc Alte)	5650*1900*2650	ISO 40'ft HQ	457	95.4	20V	E			
BF-M3250-60	3750	3450	20V4000G83L	LSA 53.1M80 (Leroy Somer)	5700*1950*2700	ISO 40'ft HQ	497	95.4	20V	E			

BaiFa[®]

Baifa - P series



50 Hz 60 Hz

Baifa cooperates with Perkins (fully-owned subsidiary of Caterpillar), delivers BF-P series diesel generator sets.

Design of BF-P series is to provide our gen-set user a low investment/running cost solution.



Seven manufacturing plants locate in the United Kingdom, the United States, China, India and Brazil



Economical & reliable



Ease service and maintenance

Perkins Engine

- Full range
- 50 degree ambient temperature approved
- Low operational cost
- Parts accessibilities
- Made in UK, China or India
- Global warranty and service
- HV available

Application

Standby: Telecom, Hospital, Small to big size factories, Malls and buildings, Restaurants, Airport & stations

Prime or continuous: Telecom, Sports and events, Small to big size factories, lighting tower, Hybrid Energy





Powered by Perkins | 400V, 1500RPM, 50Hz

Baifa Model	Power		Diesel Engine		Alternator	Control System	Dimension (L*W*H)mm		Fuel Cons 75%(L/H)	Displacement (L)	Cylinder	Gov
	Standby KVA	Prime KVA	Brand	Model			Open Type	Soundproof				
	BF-P10	10	9	PERKINS (CHINA)	403D-11G		S0L1-H1	Standard: ComAp AMP9 LCD	1300*690*1320	1710*880*1350	2.0	1.131
BF-P14	13.75	12.5	403A-15G1		S0L1-L1	1300*690*1320	1710*880*1350		2.7	1.496	3	M
BF-P16	16.5	15	403A-15G2		S0L1-P1	1300*690*1320	1710*880*1350		3.3	1.496	3	M
BF-P22	22	20		404A-22G1	S0L2-G1		1470*690*1320	1910*880*1450	4.1	2.216	4	M
BF-P34	33	30	PERKINS (INDIA)	1103A-33G	S0L2-P1	Optional: "ComAp" Brand LCD Display auto control system	1760*760*1380	2290*1060*1680	5.3	3.3	3	M
BF-P50	50	45		1103A-33TG1	S1L2-N1		1760*760*1380	2290*1060*1680	8.1	3.3	3	M
BF-P65	65	60		1103A-33TG2	S1L2-Y1		1760*760*1380	2290*1060*1680	10.8	3.3	3	M
BF-P70	71.5	65		1104A-44TG1	UCI 224F1		1760*760*1380	2440*1060*1680	10.9	4.4	4	M
BF-P88	88	80		1104A-44TG2	UCI 224G1		2000*900*1550	2810*1140*1830	14.0	4.4	4	E
BF-P110	110	100	PERKINS (CHINA)	1104C-44TAG2	UCI 274C1	Optional: "ComAp" Brand LCD Display auto control system	2150*900*1550	2810*1140*1830	16.8	4.4	4	E
BF-P150	148	135		1106A-70TG1	UCI 274E1		2410*930*1650	3250*1170*1800	21.8	7.01	6	M
BF-P165	165	150		1106A-70TAG2	UCI 274F1		2410*930*1650	3250*1170*1800	23.9	7.01	6	M
BF-P200	200	182		1106A-70TAG3	UCI 274G1		2550*930*1670	3590*1250*2050	30.2	7.01	6	M
BF-P220	220	200		1106A-70TAG4	UCI 274H1		2550*930*1670	3590*1250*2050	33.7	7.01	6	M
BF-P250	250	230		1506A-E88TAG2	UCDI 274J1		2580*930*1670	3590*1250*2050	35.7	8.8	6	E
BF-P275	275	250		1506A-E88TAG3	UCDI 274K1		2580*930*1670	3590*1250*2050	39.4	8.8	6	E
BF-P330	330	300		1506A-E88TAG5	S4L1D-D41		2800*1000*1690	3890*1460*2150	46.0	8.8	6	E
BF-P400	400	350	PERKINS (USA)	2206C-E13TAG2	S4L1D-E41	Standard: ComAp AMP9 LCD	3100*1120*1788	4230*1460*2150	64.0	12.5	6	E
BF-P450	450	400		2206C-E13TAG3	S4L1D-F41		3100*1120*1788	4230*1460*2150	72.0	12.5	6	E
BF-P500	500	450		2506C-E15TAG1	S4L1D-G41		3400*1270*1974	4630*1660*2250	73.0	15	6	E
BF-P550	550	500		2506C-E15TAG2	HCI 544C1		3400*1270*1974	4630*1660*2250	82.0	15	6	E
BF-P660	660	600		2806C-E18TAG1A	HCI 544E1		3600*1400*2100	5030*1860*2550	97.0	18.13	6	E
BF-P700	700	635		2806A-E18TAG2	HCI 544FS1		3600*1400*2100	5030*1660*2550	95.0	18.13	6	E
BF-P720	715	650		2806A-E18TAG2	HCI 544F1		3600*1400*2100	5030*1660*2550	97.0	18.13	6	E
BF-P825	825	750		India 4006-23TAG2A	LV1 634B1		3965*1710*2200	5800*1800*2550	119.0	22.921	6	E
				UK 4006-23TAG2A					119.0	22.921	6	E
BF-P880	880	800		India 4006-23TAG3A	S6L1D-C4		3965*1710*2200	5800*1800*2550	131.0	22.921	6	E
				UK 4006-23TAG3A					131.0	22.921	6	E
BF-P1100	1100	1000		4008TAG2A or 4008TAG2	S6L1D-E4		4650*2046*2300	ISO 20'ft GP	158.0	30.561	8	E
BF-P1250	1250	1125		4008-30TAG3	S6L1D-F4		4650*2046*2300	ISO 20'ft GP	176.0	30.561	8	E
BF-P1375	1375	1250		India 4012-46TAG0A	S6L1D-G4	Standard: ComAp auto control system MRS16	4900*2200*2480	ISO 20'ft GP	201.0	45.842	12V	E
BF-P1375	1375	1250		UK 4012-46TWG2A	S6L1D-G4		4700*1780*2400	ISO 20'ft GP	209.0	45.842	12V	E
BF-P1650	1650	1500	PERKINS (UK or INDIA)	4012-46TAG2A	PI 734C1		5000*2200*2850	ISO 40'ft HQ	236.0	45.842	12V	E
BF-P1800	1812.5	1650			4012-46TAG3A	PI 734D1	5100*2200*2850	ISO 40'ft HQ	264.0	45.842	12V	E
BF-P1875	1875	1705			4012-46TAG3A	PI 734ES1	5100*2200*2850	ISO 40'ft HQ	272.0	45.842	12V	E
BF-P2000	2000	1850		4016TAG1A	PI 734E1		5400*2650*2650	ISO 40'ft HQ	281.0	61.123	16V	E
BF-P2000(W-A)	2000	1850		4016-61TRG1	PI 734E1		5400*2650*2650	ISO 40'ft HQ	277.0	61.123	16V	E
BF-P2250(W-A)	2250	2050		4016-61TRG2	PI 734F1		5400*2650*2650	ISO 40'ft HQ	309.0	61.123	16V	E
BF-P2250	2250	2050		4016TAG2A	ECO 46-1L (Mecc Alte) PI 734F1		5400*2650*2650	ISO 40'ft HQ	317.0	61.123	16V	E
BF-P2500	2500	2272.5		4016-61TRG3	PI 734H1		6000*2700*3400	ISO 40'ft HQ	354.0	61.123	16V	E



Powered by Perkins | 440V, 1800RPM, 60Hz

Baifa Model	Power		Diesel Engine		Alternator	Control System	Dimension (L*W*H)mm		Fuel Cons 75%(L/H)	Displacement (L)	Cylinder	Gov
	Standby KVA	Prime KVA	Brand	Model			Open Type	Standard Soundproof				
	BF-P10-60	12	11	PERKINS (china)	403D-11G		PI 044E	Standard: ComAp AMP9 LCD	1300*690*1320	1710*880*1350	2.4	1.131
BF-P14-60	17	15.8	403A-15G1		PI 044G1	1300*690*1320	1710*880*1350		3.7	1.496	3	M
BF-P16-60	20	18	403D-15G		PI 044H1	1300*690*1320	1710*880*1350		3.7	1.496	3	M
BF-P24-60	26	24		403A-15G2	PI 144E1		1470*690*1320	1910*880*1450	NA	1.496	3	M
				404A-22G1			1470*690*1320	1910*880*1450	5.2	2.216	3	M
				404D-22G			1470*690*1320	1910*880*1450	5.2	2.216	4	M
BF-P32-60	35	32		404D-22TG	PI 144F1		1470*690*1320	1910*880*1450	5.7	2.216	4	M
BF-P34-60	38	35	PERKINS (UK)	1103A-33G	PI 144G1	Optional: "ComAp" Brand LCD Display auto control system	1760*760*1380	2290*1060*1680	6.6	3.3	3	M
BF-P50-60	57	52		1103A-33TG1	UCI 224C1		1760*760*1380	2290*1060*1680	9.9	3.3	3	M
BF-P65-60	75	68		1103A-33TG2	UCI 224E1		1760*760*1380	2290*1060*1680	12.5	3.3	3	M
BF-P34-60	38	35	PERKINS (INDIA)	1103A-33G	S1L2-J1	Standard: ComAp AMP9 LCD	1760*760*1380	2290*1060*1680	6.6	3.3	3	M
BF-P50-60	57	52		1103A-33TG1	UCI 224C1		1760*760*1380	2290*1060*1680	9.9	3.3	3	M
BF-P65-60	75	68		1103A-33TG2	S1L2-Y1		1760*760*1380	2290*1060*1680	12.5	3.3	3	M
BF-P70-60 (T3)	70	64		1104D-44TG1	S1L2-Y1		1760*760*1380	2290*1060*1680	12.5	3.3	3	M
BF-P70-60	84	76		1104A-44TG1	UCI 224F1	Optional: "ComAp" Brand LCD Display auto control system	1760*760*1380	2440*1060*1680	12.8	4.4	4	E
BF-P88-60	100	91		1104A-44TG2	UCI 224G1	1. MRS10	2000*900*1550	2810*1140*1830	16.9	4.4	4	M
BF-P110-60	125	114		1104C-44TAG2	UCI 274C1	2. MRS16	2150*900*1550	2810*1140*1830	20.2	4.4	4	LCG2
BF-P140-60	143	130	PERKINS (CHINA)		UCI 274D1		2410*930*1650	3250*1170*1800	26.5	7.01	6	M
BF-P150-60	165	150		1106A-70TG1	UCI 274E1		2410*930*1650	3250*1170*1800	26.5	7.01	6	M
BF-P165-60	185	168		1106A-70TAG2	UCI 274F1		2410*930*1650	3250*1170*1800	28.4	7.01	6	M/LCG2
BF-P200-60	218	198		1106A-70TAG3	UCI 274G1		2550*930*1670	3590*1250*2050	35.1	7.01	6	M/LCG2
BF-P230-60	250	228		1106D-E70TAG5	UCI 274H1		2550*930*1670	3590*1250*2050	38.5	7.01	6	E
BF-P250-60	275	250		1506A-E88TAG2	UCDI 274J1		2580*930*1670	3590*1250*2050	41.8	8.8	6	E
BF-P275-60	308	280		1506A-E88TAG3	UCDI 274J1		2580*930*1670	3590*1250*2050	47.5	8.8	6	E
BF-P300-60	330	300			S4L1D-C41		2800*1000*1690	3890*1460*2150	56.8	8.8	6	E
BF-P330-60	380	350		1506A-E88TAG5	S4L1D-D41		2800*1000*1690	3890*1460*2150	56.8	8.8	6	E
BF-P400-60	438	400	PERKINS (UK or INDIA)	2206D-E13TAG2	S4L1D-E41		3100*1120*1788	4230*1460*2150	67	12.5	6	E
BF-P450-60	500	450		2206D-E13TAG3	S4L1D-F41		3100*1120*1788	4230*1460*2150	73	12.5	6	E
BF-P500-60	550	500		2506C-E15TAG1	HCI 544C1		3400*1270*1974	4630*1660*2250	77	15	6	E
BF-P550-60	625	568		2506C-E15TAG3	HCI 544D1		3400*1270*1974	4630*1660*2250	96	15	6	E
BF-P625-60	688	625		2506C-E15TAG4	HCI 544E1		3400*1270*1974	4630*1660*2250	146	15	6	E
BF-P720-60	750	681		2806C-E18TAG3	HCI 544E1	Standard: ComAp MRS16	3600*1400*2100	5030*1660*2550	112	18.13	6	E

BaiFa®

Baifa - SC series



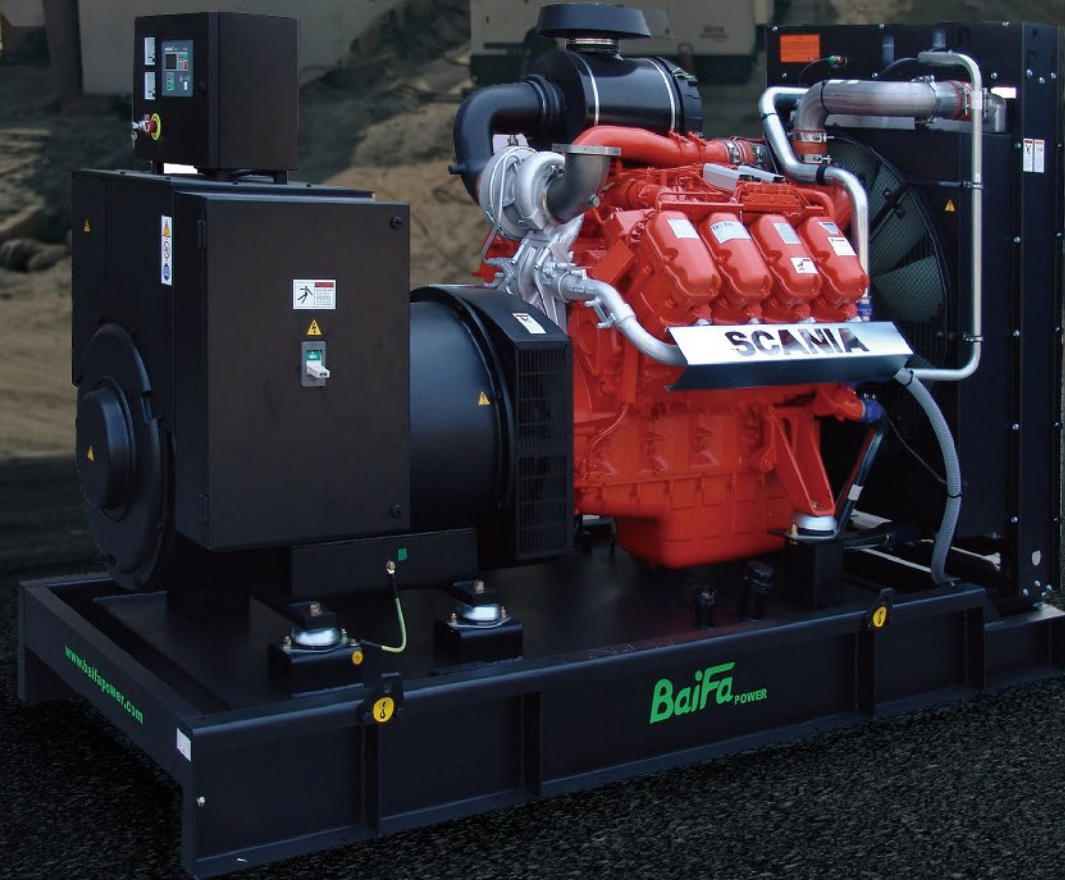
Modular product design-parts sharing between engines



Adapt to harsh environment high altitude, extreme hot and cold environment



Proven performance 24/7



Powered by Scania | 400V, 1500RPM, 50Hz



Scania Engine

- Medium range
- Low noise
- Low fuel consumption
- Low emission (Tier 2, Tier 3, Tier 4F, Stage 5)
- Low footprint
- Longer service interval
- Longer overhaul interval
- 50 degree ambient temperature approved
- ISO8528 G3 load taking
- Made in EUROPE
- Biodiesel acceptable up to B100
- Gas convertible kit available.
- Global warranty and service

Application

Standby: Suitable of all small to medium size industrial application

Prime or continuous: Mining, Power station, Farming, Oil & gas, Port and off-shore, On road or off-road mobile power(power truck), Rental power, Heavy construction equipment, High altitude application, Extreme hot region application, Extreme cool region application, Pump application, Sports and events, Small to medium size factories

Baifa Model	Power		Diesel Engine		Alternator	Control System	Dimension (L*W*H)mm		Fuel Cons 75%(L/H)	Displacement (L)	Cylinder	Gov
	Standby KVA	Prime KVA	Brand	Model	Stamford		Open Type	Standard Soundproof				
BF-SC275	275	250	SCANIA	DC09 072A 02-11	UCDI 274K1	Standard: ComAp MRS10 Optional: ComAp MRS16	2730*1270*1795	3890*1460*2150	35.7	9.3	5	E
BF-SC350	330	300		DC09 072A 02-13	S4L1D-D41		2840*1270*1795	3890*1460*2150	42.4	9.3	5	E
BF-SC360	357	325		DC09 072A 02-14	S4L1D-E41		2840*1270*1795	3890*1460*2150	46.0	9.3	5	E
BF-SC415	415	380		DC13 073A 02-21	S4L1D-F41		3200*1270*1940	4230*1440*2250	56.3	12.7	6	E
BF-SC450	450	410		DC12 59A 10-33A	S4L1D-F41		3200*1270*1940	4230*1440*2250	63.5	11.7	6	E
BF-SC500	500	450		DC13 073A 02-23	S4L1D-G41		3280*1270*1940	4230*1440*2250	67.1	12.7	6	E
BF-SC550	550	500		DC16 45A 10-30A or DC13 073A 02-24	HCI 544C1		3265*1270*1940	4630*1660*2250	74.9	15.6	8V	E
BF-SC600	600	550		DC16 44A 10-27A	HCI 544D1		3265*1270*1940	4630*1660*2250	81.6	15.6	8V	E
BF-SC625	625	563		DC16 44A 10-27A	HCI 544E1		3265*1270*1940	4630*1660*2250	83.3	15.6	8V	E
BF-SC660	660	600		DC16 072A 02-11	HCI 544E1		3400*1400*2100	5030*1650*2550	85.2	15.6	8V	E
BF-SC700	700	635		DC16 072A 02-12	HCI 544FS1		3400*1400*2100	5030*1650*2550	89.6	16.4	8V	E
BF-SC720	720	650		DC16 072A 02-12	HCI 544F1		3400*1400*2100	5030*1650*2550	91.8	16.4	8V	E
BF-SC770	770	700		DC16 072A 02-13	LVI 634B1		3400*1400*2100	5030*1650*2550	100.1	16.4	8V	E

BaiFa®

Baifa - DW series



Standby power solution



Low CAPEX



Low OPEX

Doosan Engine

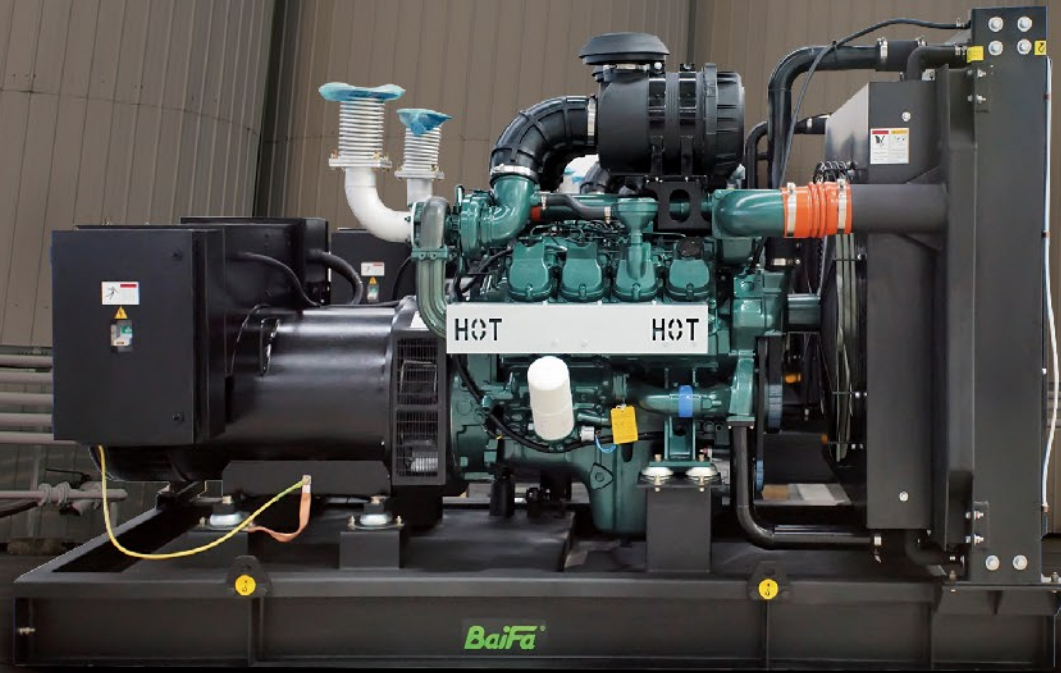
- Medium range
- Low capital expenditure

- Made in Korea
- Global warranty and service

Application

Standby: Hospital, Small to medium size factories, Malls and buildings, Restaurants, Airport & stations

Prime or continuous: Farming, Sports and events, Small to medium size factories



Powered by Doosan | 400V, 1500RPM, 50Hz

50 Hz

Baifa Model	Power		Diesel Engine		Alternator	Control System	Dimension (L*W*H)mm		Fuel Cons 75%(L/H)	Displacement (L)	Cylinder	Gov	
	Standby KVA	Prime KVA	Brand	Model	Stamford		Open Type	Standard Soundproof					
BF-DW190	187.5	168.8	DOOSAN	P086TI-1	UCI 274G1	Standard: ComAp AMF9 ComAp Optional: 1. MRS10 2. MRS16	2550*930*1670	3590*1250*2050	26.7	8.071	6	E	
BF-DW220	220	200		P086TI	UCI 274H1		2550*930*1670	3590*1250*2050	31.7	8.071	6	E	
BF-DW315	306	275		P126TI	S4L1D-D41		2960*1030*1690	3890*1460*2150	43.6	11.051	6	E	
BF-DW350	330	300		P126TI-II	S4L1D-D41		2960*1030*1690	3890*1460*2150	47.0	11.051	6	E	
BF-DW400	406	360		DP126LB	S4L1D-E41		3100*1120*1788	4230*1460*2150	57.1	11.051	6	E	
BF-DW412	412	375		P158LE-1	S4L1D-F41		3120*1390*1690	3980*1560*2150	58.4	14.618	8V	E	
BF-DW450	450	410		DP158LC	S4L1D-F41		3120*1390*1690	3980*1560*2150	65.1	14.618	8V	E	
BF-DW500	500	450		DP158LC	S4L1D-G41		3220*1390*1690	3980*1560*2150	72.9	14.618	8V	E	
BF-DW580	580	525		DP158LD	HCI 544D1		3220*1390*1690	3980*1560*2150	83.4	14.618	8V	E	
BF-DW625	625	570		DP180LA	HCI 544E1		3265*1390*1940	4630*1660*2250	94.2	18.3	10V	E	
BF-DW690	688	625		DP180LB	ECO 40-1.5L (Mecc Alte)		Standard:	3300*1390*1780	5030*1650*2550	103.8	18.3	10V	E
BF-DW700	700	635			HCI 544FS1		ComAp MRS10;			103.8	18.3	10V	E
BF-DW760	760	700		DP222LB	LVI 634B1		Optional:			109.2	21.9	12V	E
BF-DW825	825	750		DP222LC	LVI 634B1		ComApMRS16	3450*1390*1820	5030*1650*2550	119.1	21.9	12V	E

Powered by Doosan | 440V, 1800RPM, 60Hz

60 Hz

Baifa Model	Power		Diesel Engine		Alternator	Control System	Dimension (L*W*H)mm		Fuel Cons 75%(L/H)	Displacement (L)	Cylinder	Gov	
	Standby KVA	Prime KVA	Brand	Model	Stamford		Open Type	Standard Soundproof					
BF-DW190-60	208	190	DOOSAN	P086TI-1	UCI 274F1	Standard: ComAp AMF9 LCD Optional: ComAp 1. MRS10 2. MRS16	2550*930*1670	3590*1250*2050	31.6	8.071	6	E	
BF-DW220-60	250	228		P086TI	UCI 274H1		2550*930*1670	3590*1250*2050	37.7	8.071	6	E	
BF-DW315-60	330	300		P126TI	S4L1D-C41		2960*1030*1690	3890*1460*2150	52.3	11.051	6	E	
BF-DW350-60	370	335		P126TI-II	S4L1D-D41		2960*1030*1690	3890*1460*2150	56	11.051	6	E	
BF-DW400-60	440	400		DP126LB	S4L1D-E41		3100*1120*1690	4230*1460*2150	64	11.051	6	E	
BF-DW450-60	550	500		DP158LC	S4L1D-F41		3120*1390*1690	3980*1560*2150	83	14.618	8V	E	
BF-DW500-60	576	520		DP158LC	S4L1D-G41		3220*1390*1690	3980*1560*2150	83.4	14.618	8V	E	
BF-DW580-60	625	570		DP158LD	HCI 544D1		3220*1390*1690	3980*1560*2150	92.9	14.618	8V	E	
BF-DW625-60	688	625		DP180LA	HCI 544E1		3300*1390*1780	4630*1660*2250	106.6	18.3	10V	E	
BF-DW700-60	750	688		DP180LB	HCI 544E1		Standard: ComAp	3300*1390*1780	4630*1660*2250	114.2	18.3	10V	E
BF-DW730-60	825	750		DP222LA	HCI 544F1		MRS10;	3450*1390*1820	5030*1650*2550	120.4	21.9	12V	E
BF-DW760-60	880	800		DP222LB	LVI 634B1		Optional:	3450*1390*1820	5030*1650*2550	127.7	21.9	12V	E
BF-DW825-60	938	850		DP222LC	LVI 634B1		ComAp MRS16	3450*1390*1820	5030*1650*2550	134.4	21.9	12V	E

BaiFa®

Baifa - SM series

750 KVA 2250 KVA 50Hz



JV Mitsubishi Heavy Industry Technology core components imported from Japan. Components 99% share with Mitsubishi Heavy Industry



Prime power solution with PTA model, standby power solution with PTAA model



The after-sales service of SME products has been incorporated into the global service network system of Mitsubishi Heavy Industry

Powered by Mitsubishi | 400V, 1500RPM, 50Hz

50 Hz

SME Mitsubishi Engine

- Big range
- Low capital expenditure
- Global warranty and service
- HV available

Application

Standby: Hospital, Medium to big size factories, Malls and buildings, Restaurants, Airport & stations, Data center

Prime: PTA series suitable for: Mining and power station

Baifa Model	Power		Diesel Engine		Alternator	Control System	Dimension (L*W*H) mm		Fuel Cons 100%(L/H)	Displacement (L)	Cylinder	Gov
	Standby KVA	Prime KVA	Brand	Model	Stamford		Open Type	Standard				
BF-SM825	825	750	SME Mitsubishi	S6R2-PTAA-C	LVI 634B1	Standard: ComAp MRS10 Optional: ComAp MRS16	4080*1715*2000	ISO 20' ft GP	160	29.96	6L	E
BF-SM1375	1375	1250		S12R-PTA-C	S6L1D-G4		4520*2200*2510	ISO 20' ft GP	252	49.03	12V	E
BF-SM1500	1500	1375		S12R-PTA2-C	S6L1D-H4		4520*2200*2510	ISO 20'ft HQ	276	49.03	12V	E
BF-SM1650	1650	1500		S12R-PTAA2-C	PI 734C1		4920*2200*3000	ISO 20'ft HQ	338	49.03	12V	E
BF-SM1900	1900	1740		S16R-PTA-C	PI 734ES1		5470*2200*2550	ISO 40'ft HQ	377	65.37	16V	E
BF-SM2100	2100	1900		S16R-PTA2-C	PI 734E1		5470*2200*2550	ISO 40'ft HQ	416	65.37	16V	E
BF-SM2250	2250	2050		S16R-PTAA2-C	ECO 46-1L (Mecc Alte)		5700*2400*2575	ISO 40'ft HQ	449	65.37	16V	E
					PI 734F1		5985*2555*2775	ISO 40'ft HQ	452	65.37	16V	E
BF-SM2500	2500	2250		S16R2-PTAW-C	PI 734H1		5985*2555*2775	ISO 40'ft HQ	477	79.9	16V	E

BaiFa®

Baifa - BD series



Power efficiency for every application



Adapt to harsh environments,
high altitude,
extreme cold and hot



French brand and technology
Weichai fully owned,
economical and reliable

Baudouin Engine

- Medium to big range
- Low capital expenditure
- Low emission (Tier 2, Tier 3)
- Longer service interval
- Low fuel consumption with common rail tech
- France brand
- Global warranty and service
- HV available

Application

Standby: Suitable of all medium to big size industrial application

Prime or continuous: Mining, Power station, Farming, Oil & gas, Rental power, High altitude application,
Extreme hot region application, Sports and events, Medium to big size factories



Powered by Baudouin | 400V, 1500RPM, 50Hz

50 Hz

Baifa Model	Power		Diesel Engine		Alternator	Control System	Dimension (L*w*h)mm	
	Standby KVA	Prime KVA	Brand	Model	Stamford		Open Type	Standard Soundproof
BF-BD500	500	450	Baudouin	6M26D447E200	S4L1D-G41	Standard: ComAp MRS10 Optional: ComAp MRS16	3600*1520*1900	4630*1660*2250
BF-BD550	550	500		6M26D484E200	HCI544C1		3600*1520*1900	4630*1660*2250
BF-BD650	650	575		6M33D572E200	HCI 544E1		3700*1600*2050	5030*1860*2550
BF-BD700	700	635		6M33D633E200	HCI 544FS1		3800*1600*2050	5030*1860*2550
BF-BD750	750	NA		6M33D670E200	S5L1D-G4		3800*1600*2050	5030*1860*2550
BF-BD825	825	750		12M26D748E200	S5L1D-H1		4500*2100*2080	5800*1800*2550
BF-BD880	880	800		12M26D792E200	S6L1D-C4		4500*2100*2080	5800*1800*2550
BF-BD1000	1000	910		12M26D902E200	S6L1D-D4		4500*2100*2080	ISO 20'ft GP
BF-BD1100	1125	1025		12M26D968E200	S6L1D-E4		4500*2100*2080	ISO 20'ft GP
BF-BD1250	1250	1135		12M33D1108E200	S6L1D-F4		4600*2100*2300	ISO 20'ft GP
BF-BD1375	1375	1250		12M33D1210E200	S6L1D-G4		4600*2100*2300	ISO 20'ft GP
BF-BD1500	1500	NA		12M33D1320E200	S6L1D-H4		4600*2100*2300	ISO 20'ft GP
BF-BD1700	1700	1550		16M33D1530E310	PI 734C1		5200*2200*2500	ISO 40'ft HQ
BF-BD 1800	1800	1640		16M33D1580E310	PI 734D1		5300*2200*2500	ISO 40'ft HQ
BF-BD 1900	1900	1750		16M33D1680E310	PI 734ES1		5300*2300*2600	ISO 40'ft HQ
BF-BD 2060	2060	NA		16M33D1800E310	PI 734E1		5300*2300*2600	ISO 40'ft HQ

Powered by Baudouin | 440V, 1800RPM, 60Hz

60 Hz

Baifa Model	Power		Diesel Engine		Alternator	Control System	Dimension (L*w*h)mm	
	Standby KVA	Prime KVA	Brand	Model	Stamford		Open Type	Standard Soundproof
BF-BD500-60	500	450	Baudouin	6M26D447E201	S4L1D-F41	Standard: ComAp MRS10 Optional: ComAp MRS16	3600*1520*1900	4630*1660*2250
BF-BD550-60	550	500		6M26D506E201	S4L1D-F41		3600*1520*1900	4630*1660*2250
BF-BD650-60	650	575		6M33D572E201	HCI 544D1		3700*1600*2050	5030*1860*2550
BF-BD710-60	712	650		6M33D633E201	HCI 544E1		3800*1600*2050	5030*1860*2550
BF-BD760-60	760	690		6M33D670E201	HCI 544E1		3800*1600*2050	5030*1860*2550
BF-BD 825-60	825	750		12M26D748E201	HCI 544F1		4500*2100*2080	5800*1800*2550
BF-BD880-60	880	800		12M26D792E201	S5L1D-G4		4500*2100*2080	5800*1800*2550
BF-BD1000-60	1000	910		12M26D902E201	S6L1D-C4		4500*2100*2080	ISO 20'ft GP
BF-BD1100-60	1125	1025		12M26D1012E201	S6L1D-D4		4500*2100*2080	ISO 20'ft GP
BF-BD1250-60	1250	1135		12M33D1108E201	S6L1D-E4		4600*2100*2300	ISO 20'ft GP
BF-BD1375-60	1375	1250		12M33D1265E201	S6L1D-F4		4600*2100*2300	ISO 20'ft GP
BF-BD 1500-60	1500	NA		12M33D1320E201	S6L1D-G4		4600*2100*2300	ISO 20'ft GP
BF-BD 1600-60	1625	NA		12M33D1420E201	S6L1D-H4		4600*2100*2300	ISO 20'ft GP
BF-BD1800-60	1800	1640		16M33D1580E311	PI 734C1		5200*2200*2500	ISO 40'ft HQ
BF-BD 1900-60	1900	1750		16M33D1680E311	PI 734C1		5200*2200*2500	ISO 40'ft HQ
BF-BD 2060-60	2060	1875		16M33D1785E311	PI 734D1		5300*2300*2600	ISO 40'ft HQ
BF-BD 2200-60	2200	NA	16M33D1920E311	PI 734D1	5300*2300*2600	ISO 40'ft HQ		

BaiFa®

Baifa - K series

Powered by Kubota | 230/400V, 1500RPM, 50Hz, Stage II

8 KVA 27.5 KVA 50Hz
12.5 KVA 37.5 KVA 60Hz

50 Hz

BaiFa®

Baifa - BF series

Powered by FAW | 400V, 1500RPM, 50Hz

15 KVA 150 KVA 50Hz
16 KVA 160 KVA 60Hz

50 Hz

Single Phase, 1500rpm, 230V, P.F.= 1.0			3 Phase, 1500rpm, 230/400V, P.F.= 0.8		Diesel Engine			Alternator	Control System	Dimension L*W*H (mm) Standard Soundproof
Model	Prime (kW/KVA)	Standby (kW/KVA)	Prime (kW/KVA)	Standby (kW/KVA)	Brand	Model	Emission	Stamford		
BF-K10S-60	7.5/7.5	8/8	8/10	8.8/11	Kubota	D1105-E2BG	Tier 2	S0L1-H	Standard: ComAp AMF9 LCD	1710*880*1350
BF-K13S-60	10/10	10.7/10.7	10.5/13	V1505-E2BG		Tier 2	S0L1-P	1710*880*1350		
BF-K16S-60	12/12	13.2/13.2	12.5/15.6	D1703-E2BG		Tier 2	S0L2-F	1710*880*1350		
BF-K20S-60	16/16	18/18	16.5/20	V2203-E2BG		Tier 2	S0L2-F	1910*880*1450		
BF-K28S-60	22.5/22.5	25/25	22/27.5	V3300-E2BG		Tier 2	S0L2-P	1810*880*1450		

Powered by Kubota | Stage II / Tier2

60 Hz

Single Phase, 1800rpm, 120/240V, P.F.= 1.0			3 Phase, 1800rpm, 277/480V, P.F.= 0.8		Diesel Engine			Alternator	Control System	Dimension L*W*H (mm) Standard Soundproof
Model	Prime (kW/KVA)	Standby (kW/KVA)	Prime (kW/KVA)	Standby (kW/KVA)	Brand	Model	Emission	Stamford		
BF-K10S-60	9/9	9.8/9.8	10/12.5	11/13.8	Kubota	D1105-E2BG	Tier 2	S0L1-H	Standard: ComAp AMF9 LCD	1710*880*1350
BF-K13S-60	12/12	13/13	13/16.3	14.3/18		V1505-E2BG	Tier 2	S0L1-P		1710*880*1350
BF-K16S-60	14/14	15/15	15/18.8	16.5/20.6		D1703-E2BG	Tier 2	S0L2-F		1710*880*1350
BF-K20S-60	19/19	20.5/20.5	20/25	22/27.5		V2203-E2BG	Tier 2	S0L2-F		1910*880*1450
BF-K28S-60	26.5/26.5	29/29	30/37.5	33/41.3		V3300-E2BG	Tier 2	S0L2-P		1810*880*1450

Powered by Kubota | Tier 4F

60 Hz

Single Phase, 1800rpm, 120/240V, P.F.= 1.0			3 Phase, 1800rpm, 277/480V, P.F.= 0.8		Diesel Engine			Alternator	Control System	Dimension L*W*H (mm) Standard Soundproof
Model	Prime (kW/KVA)	Standby (kW/KVA)	Prime (kW/KVA)	Standby (kW/KVA)	Brand	Model	Emission	Stamford		
BF-K10S-60EC	9/9	9.8/9.8	10/12.5	11/13.8	Kubota	D1105-E2BG	Tier 2	S0L1-H	Standard: ComAp AMF9 LCD	1710*880*1350
BF-K13S-60EC	12/12	13/13	13/16.3	14.3/18		V1505-E2BG	Tier 2	S0L1-P		1710*880*1350
BF-K16S-60EC	14/14	15/15	15/18.8	16.5/20.6		D1703-E2BG	Tier 2	S0L2-F		1710*880*1350
BF-K20S-60EC	19/19	20.5/20.5	20/25	22/27.5		V2203-E2BG	Tier 2	S0L2-F		1910*880*1450
BF-K28S-60EC	26.5/26.5	29/29	30/37.5	33/41.3		V3300-E2BG	Tier 2	S0L2-P		1810*880*1450

Baifa Model	Power		Diesel Engine		Alternator	Control System	Dimension (L*W*H)mm		Fuel Cons 75%(L/H)	Displacement (L)	Cylinder	Gov
	Standby KVA	Prime KVA	Brand	Model	Stamford		Open Type	Standard Soundproof				
BF16	16.5	15	FAW	D4-85G1 (4DW81-23D)	BF1D	Standard: ComAp AMF9 LCD	1400*650*1200	1910*880*1450	4.2	2.27	4	M
BF22	22	20		D4-90G1 (4DW91-29D)	BF1E		1400*650*1200	1910*880*1450	5.6	2.54	4	M
BF28	27.5	25		TD4-90G1 (4DW92-35D)	BF1F		1400*650*1200	1910*880*1450	6.8	2.54	4	M
BF33	33	30		TD4-90G2 (4DW92-39D)	BF1G		1400*650*1200	1910*880*1450	7.6	2.54	4	E
BF44	44	40		D4-102G2 (4DX21-53D)	BF1K		1800*750*1200	2290*1060*1680	10.7	3.86	4	E
BF55	55	50		TD4-102G2 (4DX22-65D)	BF2B		1800*750*1200	2440*1060*1680	12.2	3.86	4	E
BF66	66	60		TAD4-102G2 (4DX23-78D)	BF2C		2100*750*1200	2810*1140*1800	14.4	3.86	4	E
BF75	75	68		TD4-110G2 (CA4110/125Z-09D)	BF2CL		2100*860*1400	2810*1140*1800	16.7	4.75	4	E
BF95	94	85		TAD4-110G2 (CA4DF2-12D)	BF2D		2100*860*1400	2810*1140*1800	19.4	4.75	4	E
BF110	110	100		TD6-110G1-1 (CA6DF2D-14D)	BF3A		2450*860*1550	3230*1170*1800	22.8	6.55	6	E
BF142	142	130		TD6-110G1 (CA6DF2-17D)	BF3C		2450*860*1550	3230*1170*1800	29.0	7.13	6	E
BF165	165	150		TAD6-110G2 (CA6DF2-19D)	BF3D		2450*860*1550	3230*1170*1800	32.5	7.13	6	E

Powered by FAW | 440V, 1800RPM, 60Hz

60 Hz

Baifa Model	Power		Diesel Engine		Alternator	Control System	Dimension (L*W*H)mm		Fuel Cons 75%(L/H)	Displacement (L)	Cylinder	Gov
	Standby KVA	Prime KVA	Brand	Model	Stamford		Open Type	Standard Soundproof				
BF16-60	17.5	16	FAW	4DW81-28D	BF1D	Standard: ComAp AMF9 LCD	1400*650*1200	1910*880*1450	5	2.27	4	M
BF22-60	27.5	25		4DW91-38D	BF1E		1400*650*1200	1910*880*1450	7.42	2.54	4	M
BF28-60	33	30		4DW92-42D	BF1F		1400*650*1200	1910*880*1450	8.51	2.54	4	M
BF40-60	44	40		4DX22-60D	BF1J		1800*750*1200	2290*1060*1680	10.6	3.86	4	M
BF55-60	66	60		4DX23-82D	BF2B		1800*750*1200	2440*1060*1680	15.68	3.86	4	M
BF75-60	88	80		CA4110/125Z-11D	BF2CL		2100*860*1400	2810*1140*1800	19.5	4.75	4	E
BF95-60	110	100		CA4DF2-14D	BF2D		2100*860*1400	2810*1140*1800	23.1	4.75	4	E
BF142-60	142	130		CA6DF2-18D	BF3C		2450*860*1550	3230*1170*1800	29.4	7.13	6	E
BF165-60	176	160		CA6DF2-21D	BF3D		2450*860*1550	3230*1170*1800	34.8	7.13	6	E



Characteristic

- More advanced, more reliable, more environmental friendly and cost efficient marine diesel generator.
- Rugged dependability, high quality and innovation make Baifa Cummins marine generators the power you can rely on.
- The ComAP marine control system equipped with self-monitoring capability and network communication.
- The easy to operate ComAP digital display provides diagnostics including engine and alternator information, self-diagnostic features.
- The Baifa Cummins marine generators can be installed with soundproof system to lower sound and vibration. Our soundproof canopy minimize noise and vibration.
- The Baifa Cummins marine generators have CCS certificates for both engine and alternator, the genset is satisfied with CCS certification. CCS belongs one of IACS members, for other certification, engine model might vary, controller will be changed to COMAP DCU marine.
- Tailor design to suit every ship.

Auxiliary - Emergency - Deck application

Baifa Cummins Marine Genset | 400V, 1500RPM, 50Hz

Genset Model	50Hz Prime Rating	Cummins Marine Engine Model	Stamford Marine Alternator 50Hz Insulation/Temp Rise H/H
BF-C50M	40Kw/50kva	4BTA3.9-GM47	UCM224E
BF-C63M	50Kw/63kva	6BT5.9-GM83	UCM224F
BF-C88M	70Kw/88kva	6BT5.9-GM83	UCM274D
BF-C113M	90Kw/113kva	6BTA5.9-GM100	UCM274E
BF-C125M	100Kw/125kva	6CT8.3-GM115	UCM274E
BF-C150M	120Kw/150kva	6CTA8.3-GM155	UCM274G
BF-C175M	140Kw/175kva	6CTA8.3-GM155	UCM274H
BF-C200M	160Kw/200kva	6LTA8.9-GM200	UCDM274J
BF-C225M	180Kw/225kva	N855-DM	UCDM274K
BF-C250M	200Kw/250kva	N855-DM	HCM434D
BF-C313M	250Kw/313kva	N855-DM	HCM434E
BF-C350M	280Kw/350kva	N855-DM	HCM434F
BF-C400M	320Kw/400kva	K19-DM	HCM534C
BF-C450M	360Kw/450kva	K19-DM	HCM534D
BF-C500M	400Kw/500kva	K19-DM	HCM534E
BF-C625M	500Kw/625kva	K38-DM	HCM634G
BF-C700M	560Kw/700kva	K38-DM	HCM634H
BF-C825M	660Kw/825kva	K38-DM	HCM634J
BF-C875M	700Kw/875kva	K38-DM	HCM634K
BF-C1000M	800Kw/1000kva	K38-DM	PM734B
BF-C1188M	950Kw/1188kva	K50-DM	PM734C



Baifa Cummins Marine Genset | 440V, 1800RPM, 60Hz

Genset Model	60Hz Prime Rating	Cummins Marine Engine Model	Stamford Marine Alternator 50Hz Insulation/Temp Rise H/H
BF-C50M-60	40Kw/50kva	4BTA3.9-GM65	UCM224D
BF-C63M-60	50Kw/63kva	4BTA3.9-GM65	UCM224F
BF-C80M-60	64Kw/80kva	6BT5.9-GM100	UCM224G
BF-C100M-60	80Kw/100kva	6BT5.9-GM100	UCM274C
BF-C125M-60	100Kw/125kva	6BTA5.9-GM120	UCM274E
BF-C138M-60	110Kw/138kva	6CT8.3-GM129	UCM274E
BF-C150M-60	120Kw/150kva	6CTA8.3-GM175	UCM274F
BF-C188M-60	150Kw/188kva	6CTA8.3-GM175	UCM274G
BF-C250M-60	200Kw/250kva	N855-DM	UCDM274J
BF-C313M-60	250Kw/313kva	N855-DM	HCM434D
BF-C338M-60	270Kw/338kva	N855-DM	HCM434E
BF-C375M-60	300Kw/375kva	K19-DM	HCM434F
BF-C450M-60	360Kw/450kva	K19-DM	HCM534C
BF-C500M-60	400Kw/500kva	K19-DM	HCM534D
BF-C563M-60	450Kw/563kva	K19-DM	HCM534E
BF-C625M-60	500Kw/625kva	K38-DM	HCM534E
BF-C750M-60	600Kw/750kva	K38-DM	HCM634G
BF-C825M-60	660Kw/825kva	K38-DM	HCM634H
BF-C910M-60	728Kw/910kva	K38-DM	HCM634
BF-C1063M-60	850Kw/1063kva	K38-DM	HCM634J
BF-C1438M-60	1150Kw/1438kva	K50-DM	PM734C





VTM7
7m Manual
Metal Halide/ LED
Vertical telescope type

LM9
9m Manual
Metal Halide/ LED
Lift up boom type

VTH9
9m Hydraulic
Metal Halide/ LED
Vertical telescope

FH9
9m Hydraulic
LED
Foldable scissor type

VTM7 / 9 Series Light Tower

	Standard Model	VTM7 G2000	VTM7 E800	VTM7 E1400	VTM9 G2000	VTM9 E1400
Dimensions	Height extended fully	7.15m (23' 6")	7.15m (23' 6")	7.15m (23' 6")	9m (29' 7")	9m (29' 7")
Engine	Model	Z482 Kubota	Z482 Kubota	Z482 Kubota	Z482 Kubota	Z482 Kubota
	Speed(rpm)	1500/1800	1500/1800	1500/1800	1500/1800	1500/1800
Mast & Lights	Light	4*500W MH	4*200W LED	4*350W LED	4*500W MH	4*350W LED
	Luminous flux	55000 Lm/Light	30000 Lm/Light	52500 Lm/Light	55000 Lm/Light	52500 Lm/Light
Other Features	Max. load in 40'	16	16	16	16	16

LM9 Series Lighting Tower

	Standard Model	LM9 G4000	LM9 E1400	LM9 E2000
Dimensions	Height extended fully	9m (29' 7")	9m (29' 7")	9m (29' 7")
Engine	Model	D1105 Kubota	Z482 Kubota	Z482 Kubota
	Speed(rpm)	1500/1800	1500/1800	1500/1800
Mast & Lights	Light	4*1000W MH (Oval)	4*350W LED	4*500W LED
	Luminous flux	110000 Lm/Light	52500 Lm/Light	75000 Lm/Light
Other Features	Max. load in 40'	12	12	12

VTH9 Series Light Tower

	Standard Model	VTH9 G4000	VTH9 G6000	VTH9 E1400	VTH9 E2000
Dimensions	Height extended fully	8.7m (28' 7")	8.7m (28' 7")	8.7m (28' 7")	8.7m (28' 7")
Engine	Model	D1105 Kubota	D1105 Kubota	Z482 Kubota	Z482 Kubota
	Speed(rpm)	1500/1800	1500/1800	1500/1800	1500/1800
Mast & Lights	Light	4*1000W MH	4*1500W MH (Rectangle & Double-end)	4*350W LED	4*500W LED
	Luminous flux	110000 Lm/Light	140000 Lm/Light	52500 Lm/Light	75000 Lm/Light
Other Features	Max. load in 40'	8	8	8	8

FH9 Regular Series Light Tower

	Standard Model	FH9 E1200	FH9 E2800	FH9 E3600
Dimensions	Height extended fully	9m (29' 7")	9m (29' 7")	9m (29' 7")
Engine	Model	Z482 Kubota	D1105 Kubota	D1105 Kubota
	Speed(rpm)	1500/1800	1500/1800	1500/1800
Mast & Lights	Light	8*150W LED	8*350W LED	6*600W LED
	Luminous flux	22500 Lm/Light	52500 Lm/Light	90000 Lm/Light
Other Features	Max. load in 40'	4	4	4



Wuxi Hitech Semiconductor



Peking Union Medical Center- basement generator sets



← Genesets for UN Peace-Keeping Force



↑ 2013 Samsung Electronics factory 4x2MW generator sets

← Power plant project in Tanzania



Mining & desert application →

← Draining station standby gen-set



↑ Containerized & soundproof genset airfreight to Africa

Sri Lanka Lotus tower-highest in central Asia →



Henan Sanmenxia power plant 12MW ↑

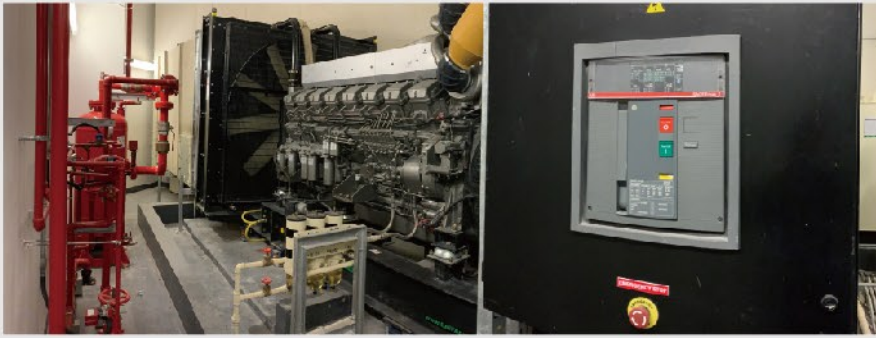
Emergency generating truck →



← Myanmar shrimp farm power station

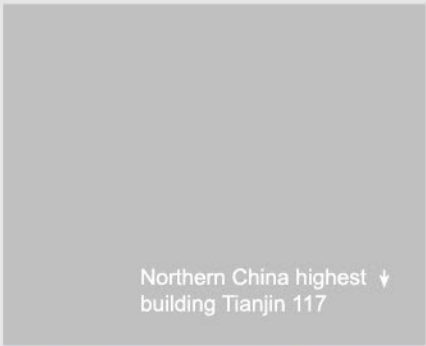
↓ Rio tinto mine power station





← Dubai,UAE marina gate standby set

Factory standby generator ↓



Northern China highest ↓
building Tianjin 117



China National Petro →
Corporation (CNPC)

Angola Lubango stadium ↓



Botswana 70MW diesel power plant ↑



← Schenker logistic NSW warehouse
Australia



↑ Airport backup generator



Qatar Millennium Hotel ↑

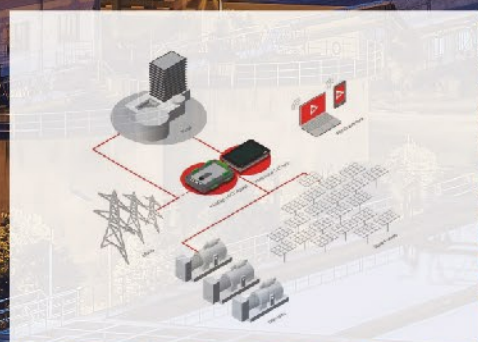
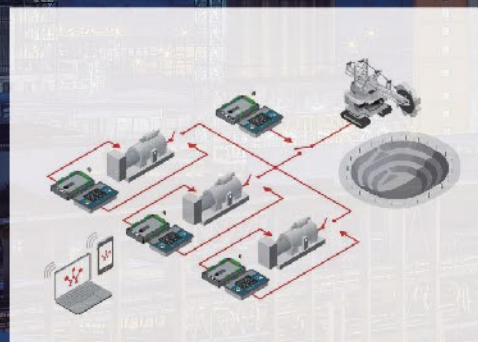
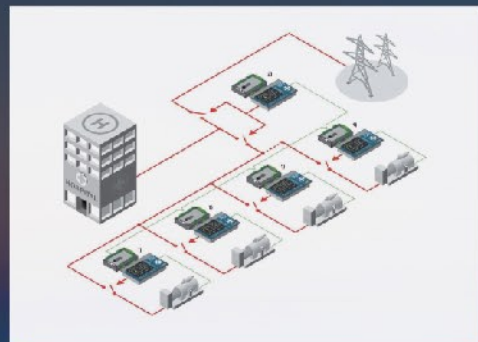
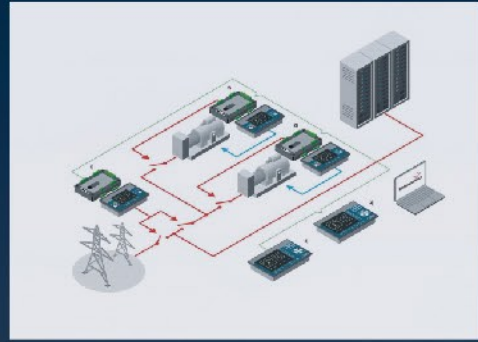
Tianjin data center →

Mongolia mining ↓



← Harbour project with trailer mobile
Stage III genset





Comprehensive Solutions For Power Generation

